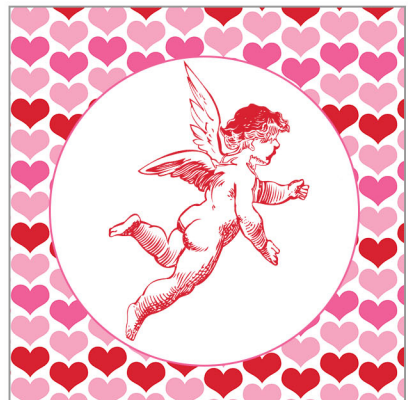
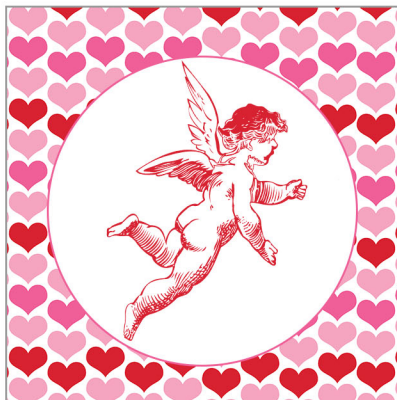
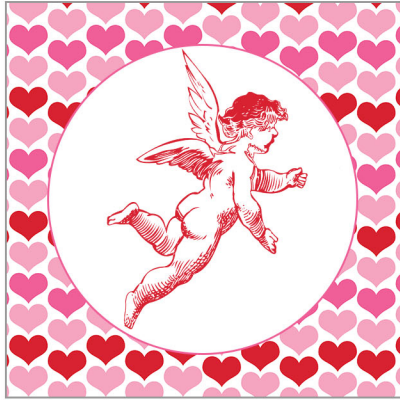


*Sweet Scarlett Events Free Valentine- 2 Inch Party Squares*





Print on plain white cardstock. Cut out with scissors. Apply Glue or approximately a 1-1/2 inch piece of 1/2 inch Double-Sided Tape (preferred method) to the Front (printed) of the Left Side where noted. Wrap the Right Side around the Left Side with the printed side facing outward. Overlap the Right Side on top of the Left Side & line up the edge of the Right Side to the dotted line on the Left Side. Press firmly together to adhere glue or double-sided tape.



I loved you *Yesterday*

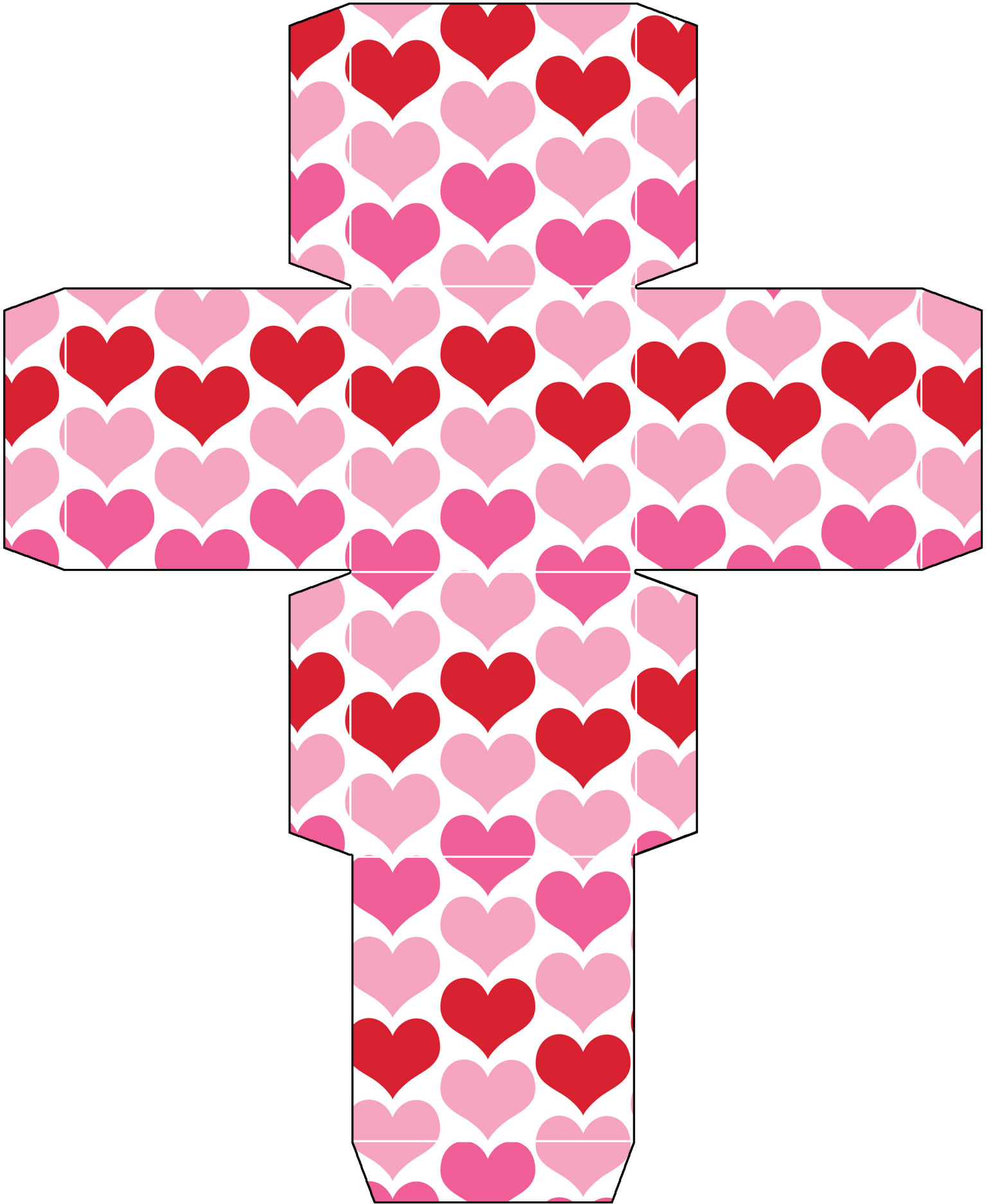
*I Love you* Still

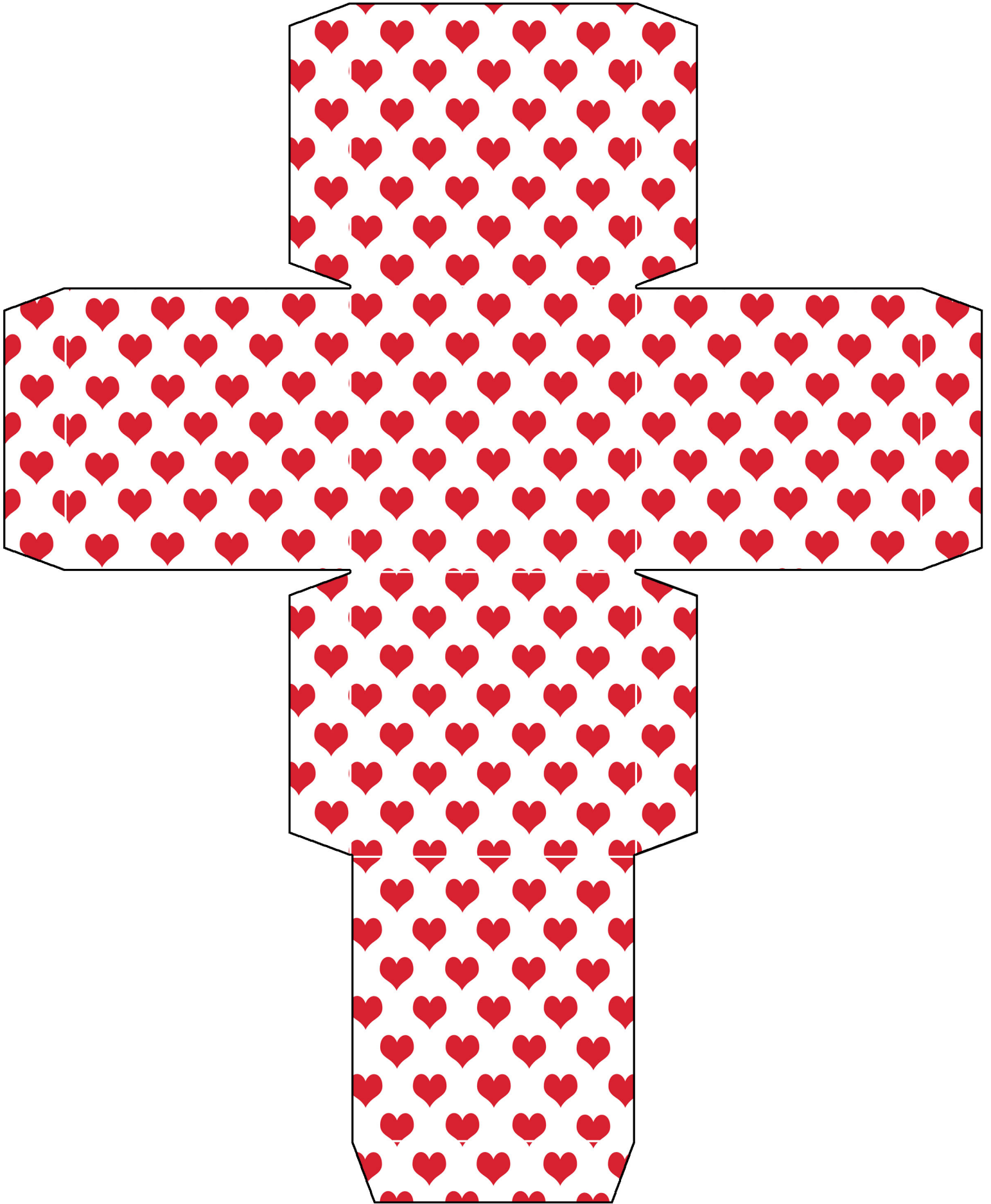
I Always have...

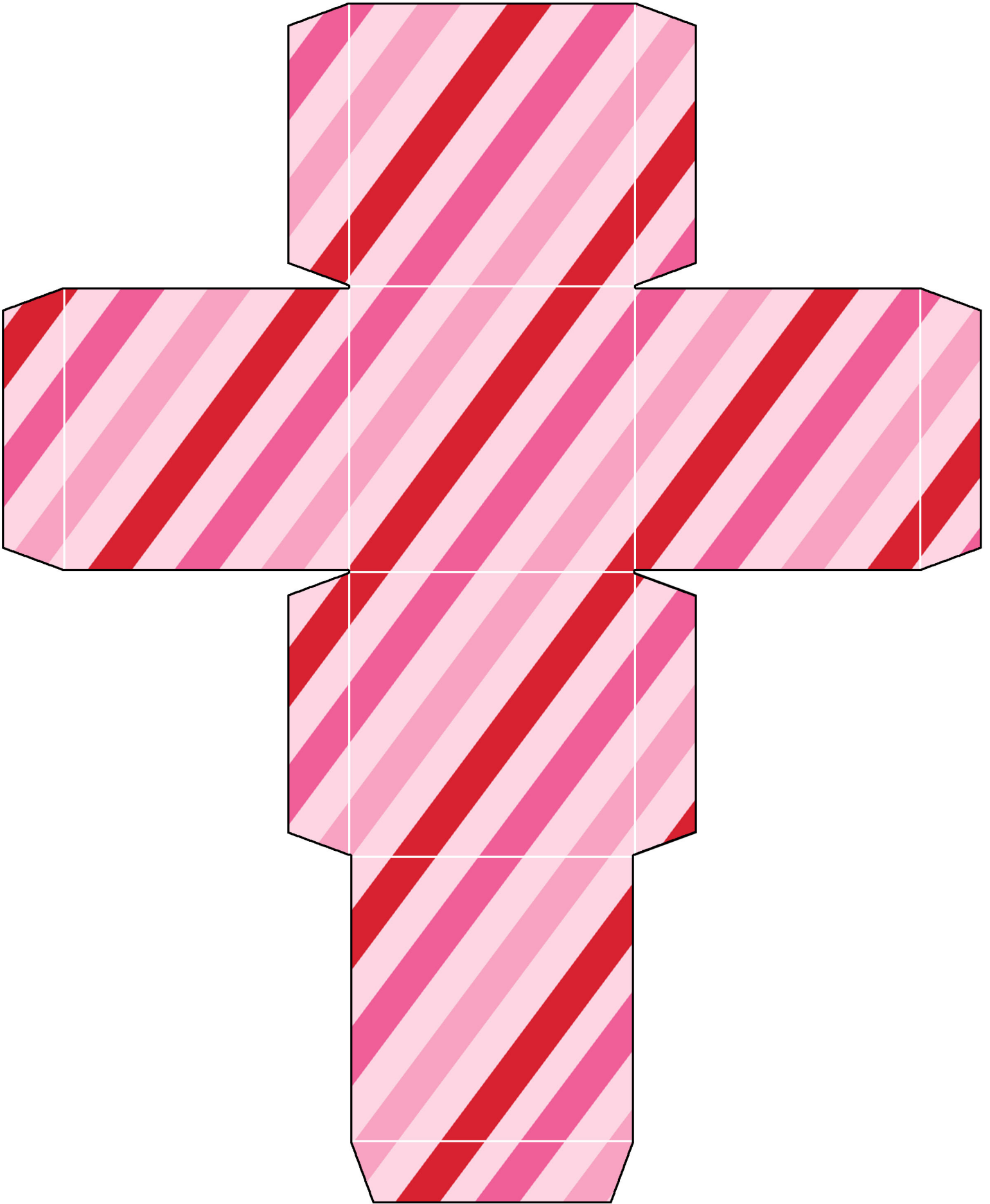
*I Always Will*











*Sweet Scarlett Events Valentines Box*

